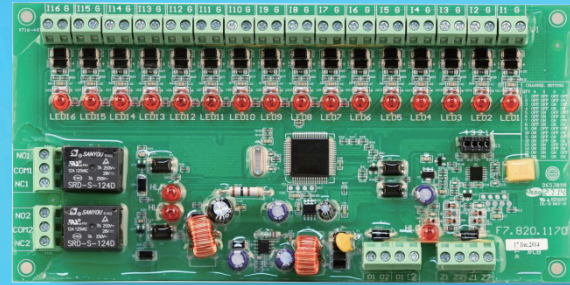


# DI-9309

## Addressable

## Multi-Channel Interface



### Description

An integrated solution for application of multi-input signals, saving mounting space and installation cost. With microprocessor, DI-9309 Addressable Multi-Channel Interface can communicate with fire alarm control panel (FACP), monitor power supply, and judge the logic state of input signal, control output and state indicators.

Each output channel occupies an individual address and receives start command from FACP, energizes the related relay, gives dry contact output. Each input is corresponded to one address to receive the state signal and transmit it to FACP. The quantity of channels can be set by jumpers.

### Features and Benefits

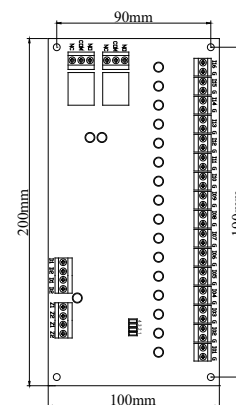
- Max. 16 channels of independent inputs. The quantity can be set as required.
- Input signals are insulated from the loop.
- Two channels of independent dry contact output.
- 3-18 consecutive addresses, changing with selected channel quantity.
- Power supply monitored.
- Cable monitored for open circuit and short circuit.

### Certificates and Compliance

- Certifications: CE-EMC

### Terminals and Installation Holes

Terminals on the MCP are shown below.



Z1, Z2: Connecting to the loop of control panel, non-polarized.

D1, D2: 24VDC power, non-polarized

I(n)G: Channel n volt-free normally open input.

NC1(NC2), COM1(COM2), NO1(NO2): Dry contact outputs of Channel I (Channel II).

### Recommended Cabling

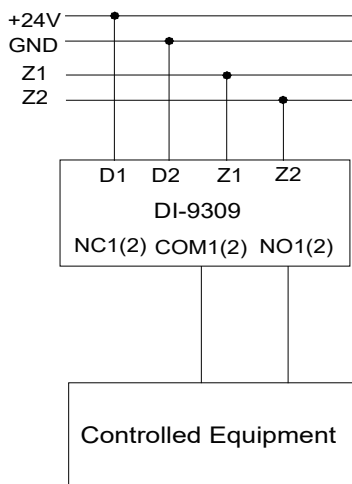
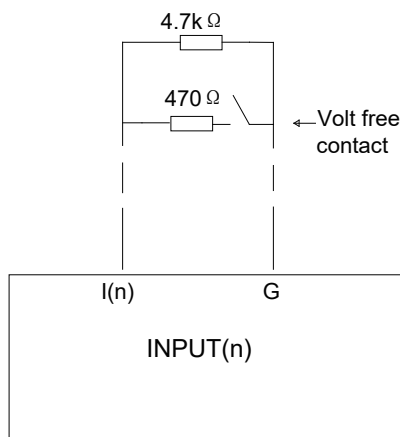
1.5mm<sup>2</sup> or above fire cable is recommended for dry contact outputs, 1.0mm<sup>2</sup> or above fire cable is recommended for others, but subject to local codes.

## Application

The DI-9309 interface is designed to connect with active equipment such as flow switch, pressure switch, position switch, signal valve and others which are able to transmit back normally open signals. The outputs can be used to connect with the equipment controlled by FACP such as fire door, pump, smoke exhaust fan, smoke vent, air vent, fire damper and etc.

The module takes a group of continuous addresses. Set the quantity of input channels by jumpers on SX3, the module will take 2 more addresses for the output channels. The output channel 1 will take the first address.

The typical connections of input channel and output channel are shown below.



## Technical Specification

Operating Voltage	Loop: 24V (16V~28V). Power Supply: 24VDC (20V~28V).
Standby Current	Loop $\leq 1.5\text{mA}$ Power $\leq 50\text{mA}$
Action Current	Loop $\leq 3\text{mA}$ Power $\leq 100\text{mA}$
Output Capacity	Output contact capacity: 220V/2A.
Programming Method	Electronically programming.
Code Range	Occupying 3-18 addresses, the output address of Channel 1 can be set within 1~225.
Action Indicators	Red. Separate polling indicator HLO. Individual state LED (n) for each input channel. Flashes in fault state. Illuminates in action state. Quiet in normal supervisory. HL1 and HL2 for each channel output. Illuminates when activated.
Ambient Temperature	-10°C ~ +50°C
Relative Humidity	$\leq 95\%$ , non condensing
Mounting Hole Distance	190mm $\times$ 90mm
Dimensions (L $\times$ W $\times$ H)	200mm $\times$ 100mm $\times$ 20mm
Weight	About 240g

## Ordering Information and Compatible Products

Part No.	DI-9309
Device Name	Addressable Multi-Channel Interface
Product No.	20101089
Compatible Products	GST200-2 Intelligent Fire Alarm Control Panel GST200N Intelligent Fire Alarm Control Panel GST- IFP8 Intelligent Fire Alarm Control Panel

## Accessories and Tools



Part No.:	P-9910B
Device name:	Handheld Programmer
Product No.:	10104894